

SE-2820

REF SE2820NR29

This SE-2820 battery is rechargeable lithium-ion, engineered and designed for use in a world wide tactical environment, and is manufactured to meet and exceed Indian military standard JSS-55555 and ISO-9000 methods and procedures. This battery meets the requirements of JSS 6140-03 : 2013 and MIL-PRF-32052 with reference to MIL-STD-810E and MIL-STD-461.

Benefits

- Wide operating temperature range
- Durable high impact ABS case, UL94V-0
- High energy density cells
- Built in protection circuitry

Key Features

- Standard power battery, 82Wh
- Robust molded plastic case

Typical Applications

- Soldier-based applications
- Portable field equipment
- Night vision equipment
- Emergency response devices
- Rugged laptop and notebooks
- KONTRON-DFL Tarang



Li-ion



Rechargeable Li-ion Battery 7.2V 11.4Ah, 82.0Wh

Compliance

- JSS-55555
- JSS-6140-03 : 2013
- MIL-STD-810E
- MIL-STD-32052

Approvals

- ISO 9001:2015
- ISO 13485:2016
- Safety Datasheet
- UL-1642 (cells)

Technical Specification:-

Model Number	SE-2820
Part Number	45751190115
Pack Designation	2INR19/65-4
Capacity (typ.)	11.4 AH
Nom. Voltage	7.2 Volt
Max. Voltage	8.4 Volt
Max. Discharge Current (cont.)	4.0 A
Max. Discharge Current (pulse)	6.0 A for 10 Sec.
Replacement to	REVO-BATT
Cat P/N:	45751190115
Life Cycle	1000 cycles at 25°C
Communication	SMBus v1.1, SBS v1.1
Recommended charge	Constant current at C/4, 2.85A with 16.8V limit End with timer or when current drops below 0.1A

Physical Characteristics

Dimensions (L x W x H)	135 x 93.50 x 20 mm
Weight	400gm ± 50gm
Weight energy density	158 Wh/Kg
Mating Connector	250137MR
Battery Housing	ABS Plastic UL94V-0
Color	Olive drab / Black

Manufactured by : **SEALED ENERGY SYSTEMS**



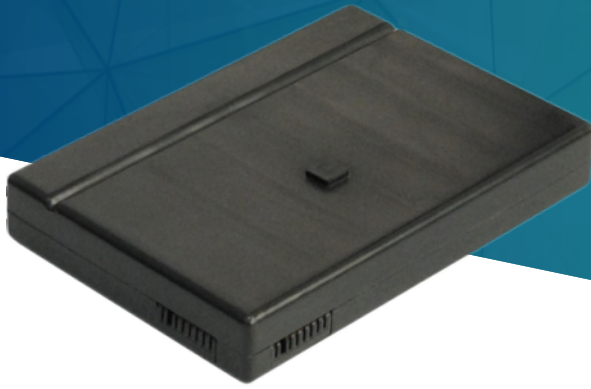
Plot No. 72, HSIIDC Industrial Estate,
Ambala Cantt - 133006, Haryana, India



+91 171 2699 054
+91 171 2698 389

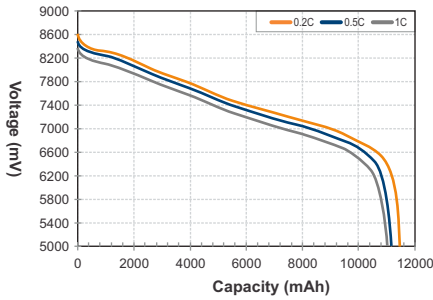


+91 171 2698 054
+91 171 2699 221

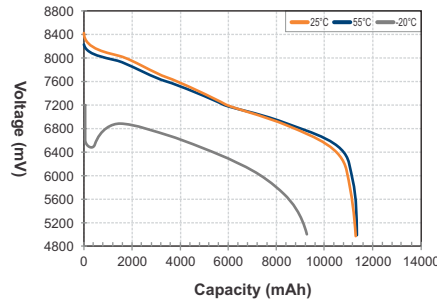


Rechargeable Li-ion Battery 7.2V 11.4Ah, 82.0Wh

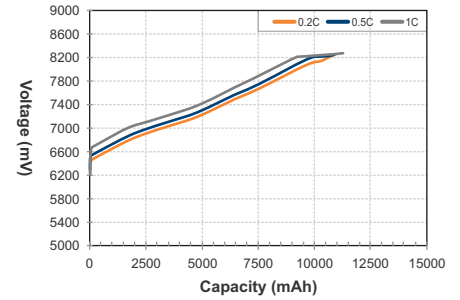
Rate discharge curve@ 25°C



Discharge curve at different temperatures



Rate charge curve@ 25°C



Protection

- Over current / short circuit
- Over charge / over discharge
- Over heating
- Charging at over temperature range
- Reverse polarity

Smart Functions

- Cell balancing
- SMBus v1.1 communications
- 5-segment LED fuel gauge

Operating Temperature

- Charge -20°C to +55°C
- Discharge -20°C to +55°C
- Storage -20°C to +55°C
- Humidity at 0 to 95%

Storage

- Allowable: -20 to +55°C
- Recommended: +20 to +40°C
- Humidity at 0 to 95%

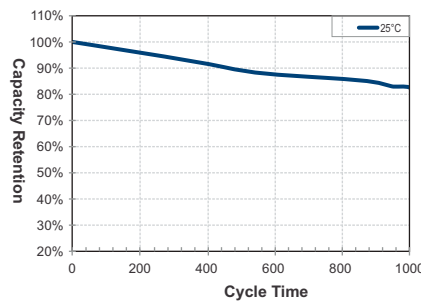
Transportation

- UN 38.3 Miscellaneous Class 9

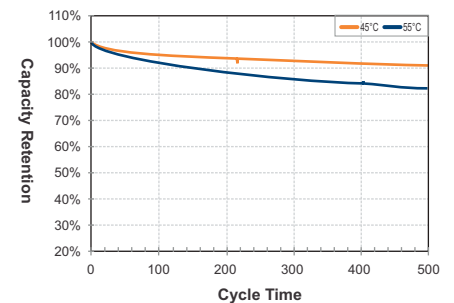
Further Information

Please refer to our website www.sesbatteries.co for a complete range of useful downloads, such as product catalogs, material safety data sheets (MSDS), ISO certification, etc.

Cycle life curve@ 25°C



High temperature cycle life curves



Product Dimension

